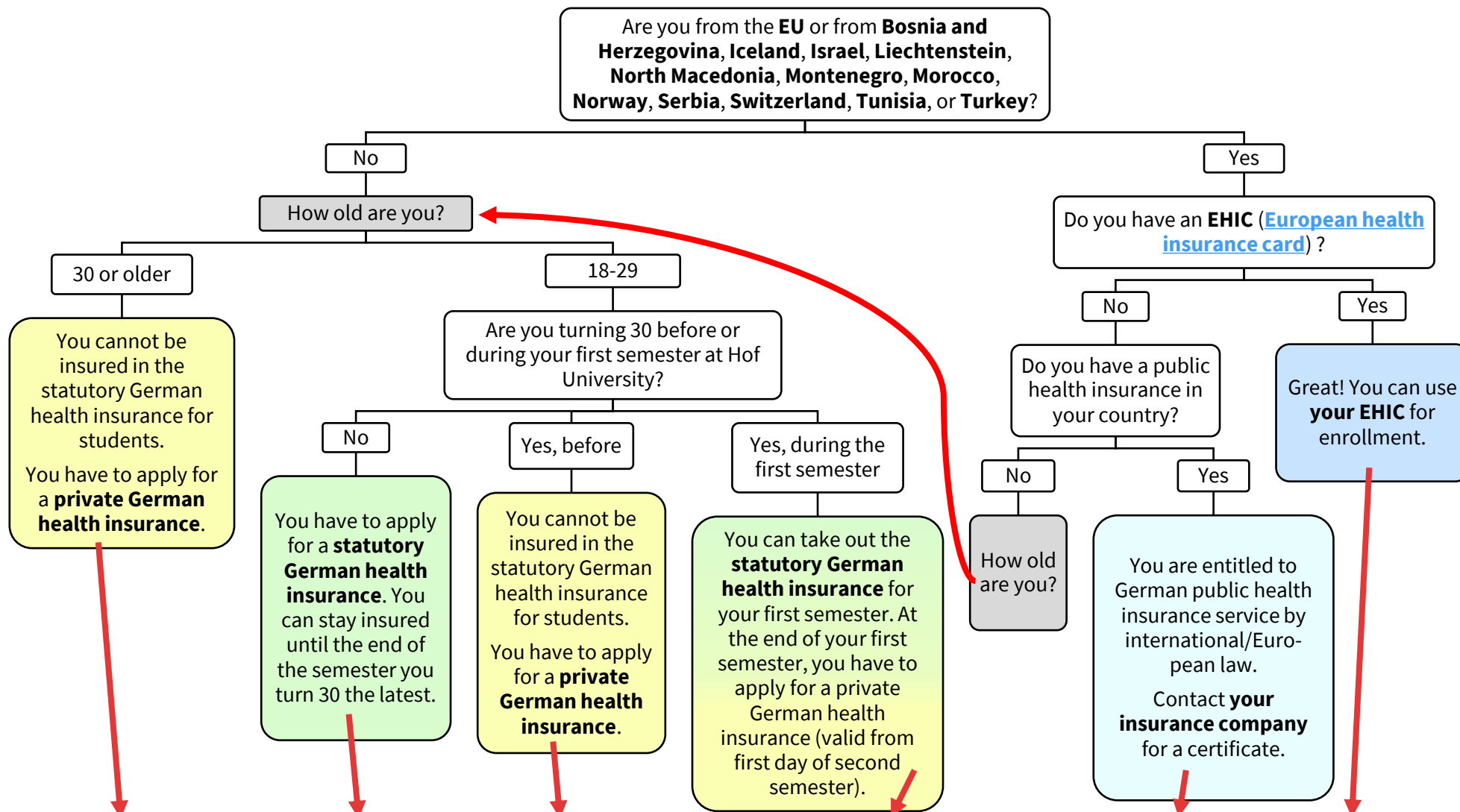


# What kind of health insurance will be accepted for enrollment?



**ALL** students must **contact a public German health insurance provider** and **inform them about** their prospective **enrollment** at Hof University. You either:

- Submit your private insurance certificate/details for approval. For this, you can [contact ANY German statutory health insurance provider](#), as all have to accept your information.

OR

- Take out a statutory German student insurance. For this, [please contact the statutory health insurance provider of your choice](#) (many of our students opt for **AOK** or **TK**).

The respective German **statutory health insurance company will inform the university about your insurance status**. Only after the university received your information from the health insurance company, you can be enrolled. **Please do NOT send your insurance documents to the university!**